

Trauma and Injury Intelligence Group Biannual Bulletin

West Cumberland Hospital Emergency Department
October 2014 to September 2015

December 2015



Centre for Public Health,
Faculty of Education, Health and Community,
Liverpool John Moores University,
Henry Cotton Campus,
15-21 Webster Street,
Liverpool, L3 2ET

cph.org.uk

0151 231 4500

tiig@ljmu.ac.uk

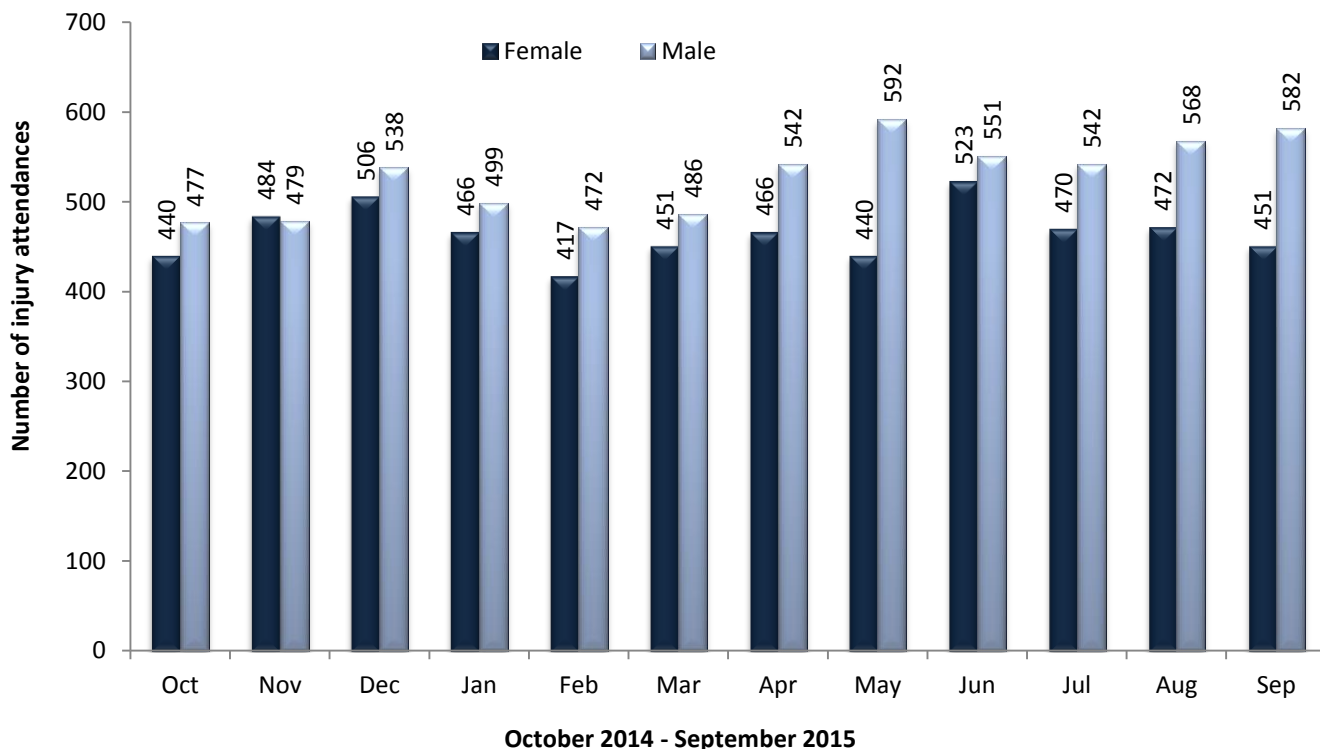
tiig.info

twitter.com/tiig_cph

ALL INJURY ATTENDANCES

This bulletin provides a breakdown of all injury attendances to West Cumberland Hospital Emergency Department (ED) between October 2014 and September 2015. In this twelve month period there were 11,914 injury attendances to the ED. The month with the highest number of attendances, calculated as a daily average, was June 2015 (36 per day) while October 2014 and March 2015, had the fewest (30 each per day; figure 1).

Figure 1: ED attendances by gender and month, October 2014 to September 2015



There were more male (53%) than female attendances to the ED in 2014/15 (n=6,328; figure 1). Just under one-third (31%) were aged between 30 and 59 years (n=3,701), 25% were aged between 15 and 29 years (n=2,945) and 24% were aged 60 years and above (n=2,800; figure 2).

Figure 2: ED attendances by age group and month, October 2014 to September 2015

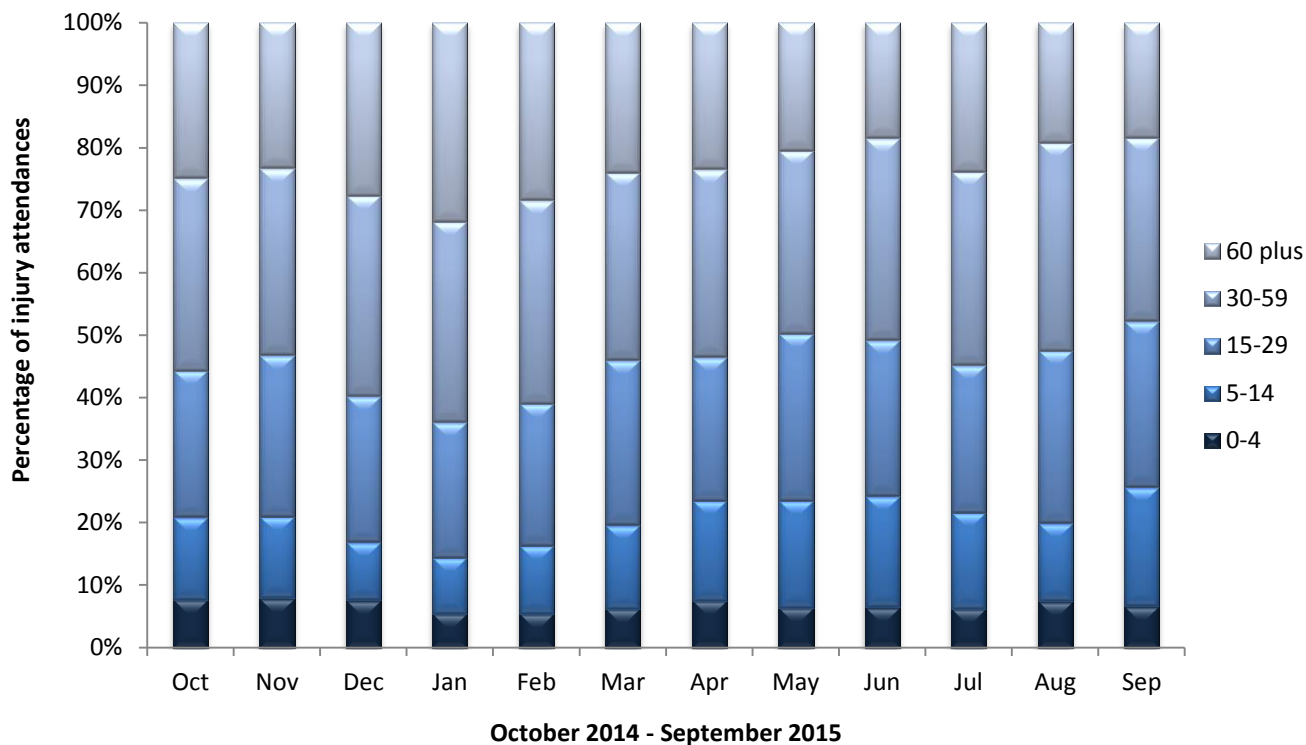


Table 1 shows the injury group of attendances between October 2014 and September 2015. Three quarters (75%) of attendances were categorised as ‘other’ injuries (n=8,931). Sports injuries accounted for just over one in ten (12%; n=1,375) injuries, while 6% of injuries were road traffic collisions (n=662). Five per cent of injuries were caused by deliberate self-harm (n=559) and 3% were assaults (n=387).

Table 1: ED attendances by injury group and month, October 2014 to September 2015

Injury group	Oct	Nov	Dec	Jan	Feb	Mar	Apr	May	Jun	Jul	Aug	Sep	Total	%
Other injury	649	704	826	758	654	681	766	778	799	764	786	766	8931	75%
Sports injury	114	114	69	80	100	132	115	117	154	125	116	139	1375	12%
Road traffic collision	71	61	63	57	72	52	58	49	46	34	44	55	662	6%
Deliberate self-harm	61	47	47	44	42	44	38	53	41	58	51	33	559	5%
Assault	22	37	39	26	21	28	31	35	34	31	43	40	387	3%
Total	917	963	1044	965	889	937	1008	1032	1074	1012	1040	1033	11914	100%

The referral source to the ED is displayed in table 2. Two thirds (66%) of attendees were self-referred (n=7,906) while just under one fifth (19%) were referred by the emergency services (n=2,219).

Table 2: ED attendances by referral source and month, October 2014 to September 2015^{1,2}

Referral source	Oct	Nov	Dec	Jan	Feb	Mar	Apr	May	Jun	Jul	Aug	Sep	Total	%
Self-referral	554	603	669	534	522	627	718	729	742	677	754	777	7906	66%
Emergency services	165	195	223	202	197	162	180	184	177	219	171	144	2219	19%
General medical practitioner	114	78	66	130	93	68	65	47	51	41	35	32	820	7%
Work	24	32	22	32	20	23	15	19	28	22	28	15	280	2%
Other	19	25	17	21	17	16	13	23	27	19	24	16	237	2%
Educational establishment	23	13	23	25	15	17	***	<10	25	7	0	18	178	1%
Health care provider	10	11	12	13	15	17	<10	<15	17	18	22	18	169	1%
Police	8	6	12	8	10	7	7	12	7	9	6	13	105	1%
Total	917	963	1044	965	889	937	1008	1032	1074	1012	1040	1033	11914	100%

Table 3 displays the incident location; forty seven per cent of injuries occurred in the home (n=5,544), while 45% occurred in 'other' locations (n=5,303).

Table 3: ED attendances by incident location and month, October 2014 to September 2015

Incident location	Oct	Nov	Dec	Jan	Feb	Mar	Apr	May	Jun	Jul	Aug	Sep	Total	%
Home	423	438	538	500	437	407	484	470	476	459	480	432	5544	47%
Other	393	386	393	362	372	456	456	474	488	479	533	511	5303	45%
Educational establishment	45	51	46	53	30	50	41	41	57	32	0	57	503	4%
Work	26	37	39	38	32	17	19	36	45	30	17	24	360	3%
Public place	30	51	28	12	18	7	8	11	8	12	10	9	204	2%
Total	917	963	1044	965	889	937	1008	1032	1074	1012	1040	1033	11914	100%

The discharge destination for ED attendances is displayed in table 4. Under three fifths (57%) of attendees were discharged from hospital with no follow-up treatment required (n=6,740). Fourteen per cent were admitted to hospital (n=1,692) and 14% were referred to an outpatient clinic (n=1,665).

¹ 'Other' includes general dental practitioner, local authority social services and other.

² Please note that all numbers less than five have been suppressed (***) in line with patient confidentiality. If there is only one number less than five in a category then two numbers have been suppressed to prevent back calculations from totals.

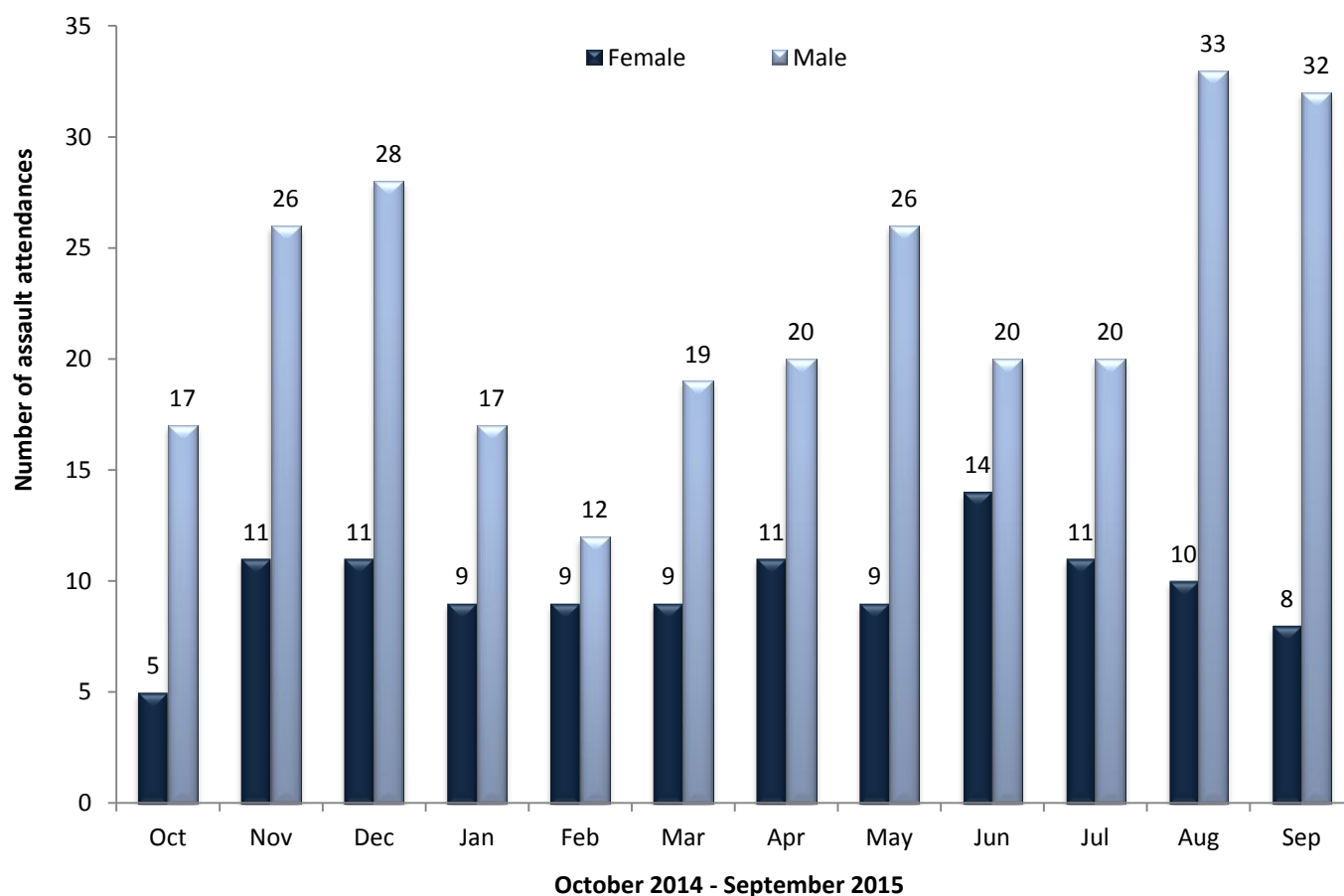
Table 4: ED attendances by discharge destination and month, October 2014 to September 2015^{2,3}

Discharge destination	Oct	Nov	Dec	Jan	Feb	Mar	Apr	May	Jun	Jul	Aug	Sep	Total	%
Discharged - no follow-up	490	559	597	522	470	480	573	592	645	550	616	646	6740	57%
Admitted to hospital	171	137	161	209	161	154	124	130	119	132	98	96	1692	14%
Outpatient clinic	101	124	129	113	121	113	129	150	172	182	166	165	1665	14%
Discharged - follow-up care by GP	74	50	40	34	43	72	43	53	56	56	48	37	606	5%
Referred to ED clinic	32	34	43	26	42	48	60	49	40	42	43	42	501	4%
Referred to other health care professional	31	23	25	25	19	19	34	24	17	19	33	18	287	2%
Other	7	16	25	22	15	22	22	13	11	13	19	15	200	2%
Left department before being treated	6	10	13	<15	11	19	14	12	***	10	8	11	129	1%
Transferred to other HCP	***	10	<15	***	5	<10	9	<10	8	8	<10	***	82	1%
Left department having refused treatment	***	0	***	0	***	***	0	0	***	0	***	***	<10	0%
Died in department	0	0	0	0	***	0	0	***	***	0	0	0	***	0%
Total	917	963	1044	965	889	937	1008	1032	1074	1012	1040	1033	11914	100%

ASSAULT ATTENDANCES

Between October 2014 and September 2015 there were 387 assault attendances to West Cumberland Hospital ED. The month with the highest number was August 2015 with 43 assault attendances (figure 3).

Figure 3: ED assault attendances by gender and month, October 2014 to September 2015



³ GP = General practitioner; HCP = Health care provider

Seven in ten (70%) attendees presenting to the ED with assault-related injuries were male (n=270; figure 3). Fifty one per cent were aged between 15 and 29 years (n=198) while 43% were aged between 30 and 59 years (n=167; table 5).

Table 5: ED assault attendances by age group and month, October 2014 to September 2015²

Age group	Oct	Nov	Dec	Jan	Feb	Mar	Apr	May	Jun	Jul	Aug	Sep	Total	%
5-14	***	***	***	***	0	***	0	***	***	0	***	***	16	4%
15-29	10	24	21	13	8	14	11	19	16	17	23	22	198	51%
30-59	<10	11	<20	<15	<15	10	20	<20	<20	<15	<20	<20	167	43%
60 plus	0	***	0	0	***	***	0	0	0	***	0	0	6	2%
Total	22	37	39	26	21	28	31	35	34	31	43	40	387	100%

The assault location is shown in table 6; three quarters (75%) of incidents were recorded as 'other' location (n=290), 12% occurred in the home (n=47) and 9% occurred in a public place (n=33).

Table 6: ED assault attendances by incident location and month, October 2014 to September 2015²

Incident location	Oct	Nov	Dec	Jan	Feb	Mar	Apr	May	Jun	Jul	Aug	Sep	Total	%
Other	17	29	28	15	17	21	21	29	25	24	33	31	290	75%
Home	***	***	***	***	***	***	6	***	6	***	<10	5	47	12%
Public place	***	***	5	***	***	0	***	***	***	***	***	***	33	9%
Educational establishment	***	***	***	***	0	***	***	***	***	0	0	***	15	4%
Work	0	0	***	***	0	0	0	0	0	0	0	0	2	1%
Total	22	37	39	26	21	28	31	35	34	31	43	40	387	100%

Table 7 displays the disposal method of assault attendances. Two thirds (66%) were discharged from the ED with no follow-up treatment required (n=255), just over one in five (21%) required follow-up treatment (n=82), 8% who discharged via 'other' disposals (n=30) and 5% were admitted to hospital (n=20).

Table 7: ED assault attendances by disposal method and month, October 2014 to September 2015²

Disposal	Oct	Nov	Dec	Jan	Feb	Mar	Apr	May	Jun	Jul	Aug	Sep	Total	%
Discharged	12	22	32	17	12	17	19	19	22	22	29	32	255	66%
Follow-up	5	12	***	5	***	6	<15	<10	8	5	9	5	82	21%
Other	***	***	***	***	***	***	***	***	***	***	***	***	30	8%
Admitted	***	***	***	***	***	***	0	5	***	***	***	***	20	5%
Total	22	37	39	26	21	28	31	35	34	31	43	40	387	100%